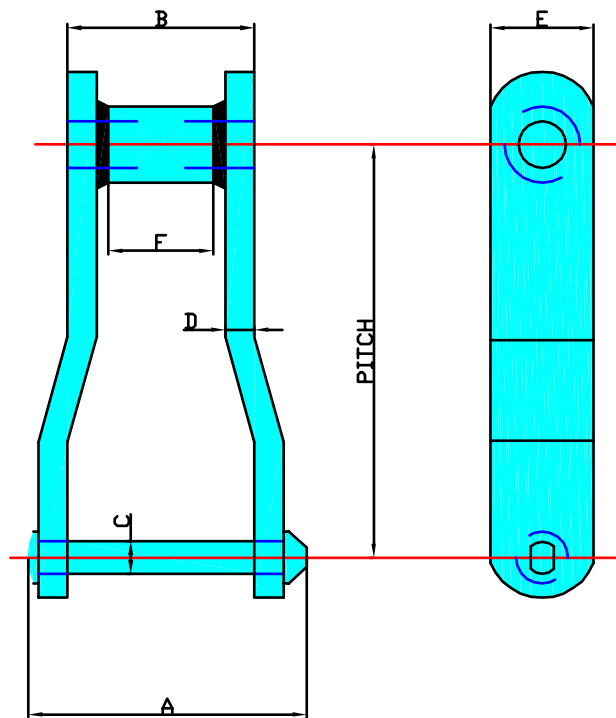


WELDED CHAINS

King chain for sedimentation tanks and bar screens

King sewerage treatment plant chains of welded steel construction provide an alternative to traditional malleable chains. A higher ultimate strength, and fabricated from alloy steel, allow for the longest possible life on sedimentation tank, bar screen, and grit channel applications.

WELDED SERIES STEEL



CHAIN N°	AVERAGE PITCH IN INCHES	ULTIMATE STRENGTH IN lbs	LINKS PER FOOT	AVERAGE WEIGHT PER FOOT IN lbs	APPROX OVERALL WIDTH	LENGTH OF BEARING	RIVET DIA.	SIDE BAR THICKNESS	SIDE BAR HEIGHT	APPROX. TOOTH FACE AT PITCH LINE	OUTSIDE BARREL DIA
					A	B	C	D	E	F	G
WH 720S	6.000	50.400	2	6.5	3 ⁷ / ₈	2 ³ / ₈	3/4	3/8	1/2	1/8	1/4



(UK) John King Chains Limited.
 New Climax Works, Lancaster Way, Sherburn in Elmet LS25 6NS UK
 Telephone: (44) 01977 681910 Facsimile: (44) 01977 681899
 E-mail: admin@johnking-chain.com
 technical@johnking-chain.com
 sales@johnking-chain.com

John King (USA) Inc.
 200 Catherine Street, Unit 7B, E. Peoria IL61611 USA
 Telephone: 309-698-9250 Facsimile: 309-698-9259
 E-mail: salesusa@johnking-chain.com

Web: www.johnkingchains.com