

WELDED CHAINS

WELDED SERIES STEEL

Heavy Duty Welded Steel Drag Chains: Heavy duty drag chains are ideal for conditions where severe abrasion and heat exist. They offer these important features and benefits:-

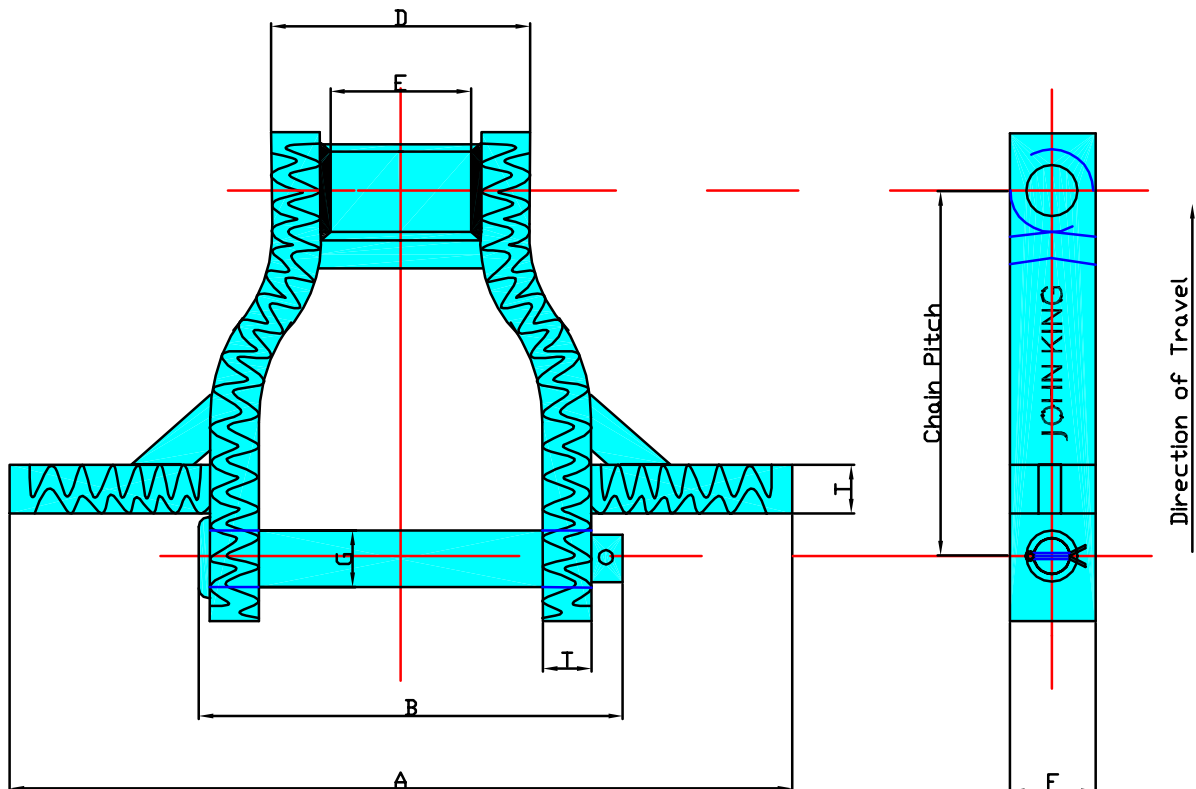
Hardface Welding on both of the chains sliding surfaces is standard. A typical weld hardness of 60 RC and a heavy weld bead give this chain excellent sliding wear resistance in cold and hot clinker applications.

Interference Fits between the pin and chain sidebar dramatically improves chain strength and joint wear life over that of a cast drag chain. In addition, no loose pins to move around in the chain joint

An Induction Hardened Pin affords the best of two worlds- a 60 RC typical hardened case and impact resistant material in the core of the pin. The result is longer service life and good resistance to shock loads.

Square Edges On The Wing and Sidebar of welded drag chain convey more efficiently than rounded cast chain edges. They also move a deeper bed of material with each revolution of chain.

Heat Treated and Steel Components eliminate the failures that cast chains experience from casting porosity and inclusions



Dimensions are in inches. Strengths, loads and weights are in pounds.

CHAIN N°	AVERAGE PITCH	A	SIDEBARS			PINS			BARREL LENGTH		MINIMUM ULTIMATE STRENGTH	RATED WORKING LOAD
			THICKNESS T	HEIGHT F	HEAT TREAT	B	C	HEAT TREAT	D	E		
WHX5157	6.050	8 to 14	0.63	2.5	TH	6.94	1.13	SIH	4.63	2.75	117000	18200
WHX6067	9.000	10 to 26	0.75	2.5	TH	8.19	1.25	CIH	5.5	3.63	195000	24300
WHX5121	9.000	10 to 30	1.13	2.5	TH	9.75	1.25	CIH	6.31	3.63	205000	27600
WHX6121	9.000	10 to 30	1.13	2.5	TH	9.75	1.25	CIH	6.31	3.63	205000	27600

Note: 1. (A) 2 inch increments

2. WHX5157 is dimensionally the same as WHX6121 except it runs closed end forward.



(UK) John King Chains Limited.
New Climax Works, Lancaster Way, Sherburn in Elmet LS25 6NS UK
Telephone: (44) 01977 681910 Facsimile: (44) 01977 681899
E-mail: admin@johnking-chain.com
technical@johnking-chain.com
sales@johnking-chain.com

John King (USA) Inc.
200 Catherine Street, Unit 7B, E. Peoria IL61611 USA
Telephone: 309-698-9250 Facsimile: 309-698-9259
E-mail: salesusa@johnking-chain.com

Web: www.johnkingchains.com