



JOHN KING



New Climax Works 2000's

COMPANY HISTORY AND INFORMATION

John King Chains Limited established in 1926 in Leeds, England has manufactured a metallic series of collector system chains for over half a century.

They entered the business of manufacturing non-metallic chains during the 1980's and over the subsequent period have developed a comprehensive range of non-metallic conveyor and drive chains together with best quality associated components. With different divisions in North America, Canada and South Africa, and distribution partners worldwide they are at your service to provide high quality and cost effective conveying solutions.

WATER AND WASTE WATER COMPONENTS - NON METALLIC RANGE

TYPICAL APPLICATIONS

Three Shaft Rectangular Clarifiers removing bottom sludge only. Typical in water treatment plants &/or combined with inclined plate or tube settler applications.

Four Shaft Rectangular Clarifiers removing bottom sludge to a sludge hopper at the influent end of the clarifier combined with skimming floating surface scum discharging via a scum pipe.

DAF TANKS - Dissolved Air Flotation with two separate systems 'Top & bottom' for sludge removal and surface skimming of floating scum up an inclined beaching plate.

GRIT BUCKET COLLECTORS

Typically five shaft collectors for grit removal with pivoting non-metallic buckets to elevate and discharge via a chute.

CLR CLIMAX RETURN SHOE

From UHMW-PE for standard rectangular systems (Also available in heat treated iron to be used in conjunction with metallic chain).

CLR AND CCS SHOE MATERIAL OPTIONS

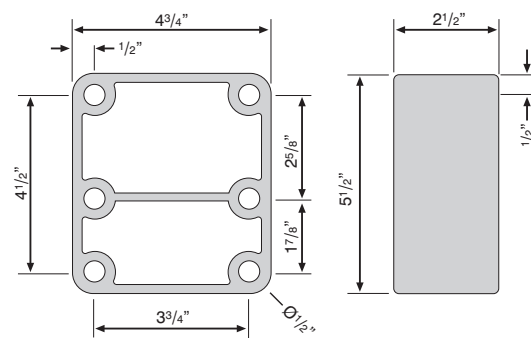
- ★ UHMW Polyethylene
- ★ Polyurethane
- ★ Cast Nylon
- ★ Polypropylene
- ★ Cast Iron



Rectangular Clarifiers During Re Chain

CSB CLIMAX SPACER BLOCK

Specifically for use with SCF and HSF channel flights the unit acts as a spacer between chain attachment paddles and C section flight. Hole positions to cover both F2 and F22 styles. Generally cast from Acetal co-polymer material.



CSB CLIMAX SPACER BLOCK

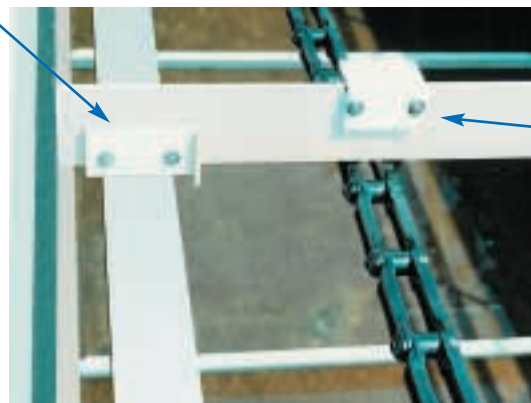


Illustration Shows SCF Flight

CCS CLIMAX CARRYING SHOE

for low friction contact on conveying strand wearstrip.

WEARSTRIP

From UHMW polyethylene 3/8" to 3/4" thick at widths as required by application.

CLIMAX NON METALLIC CHAIN AND SPROCKETS

CLIMAX SHEAR PIN SPROCKET

11 tooth PM78/11T/sp sprocket to a unique and proven design offers effective overload protection to the drive. (Contact engineering for full information).

CLIMAX CHAIN TENSIONER

offers simple slideway take up as pitch extension and resulting chain elongation develops over service life.

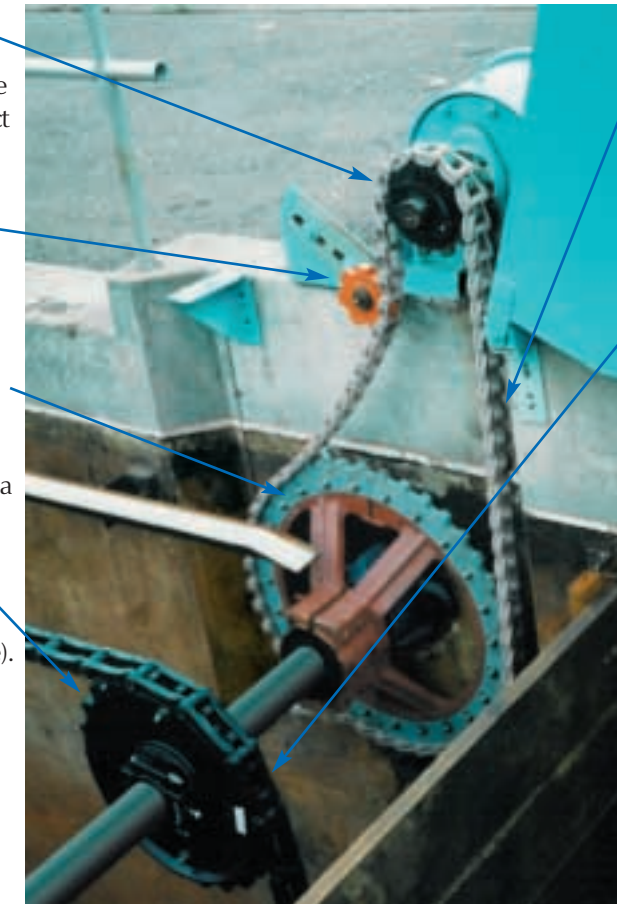
CLIMAX COMBINATION SPROCKETS

UHMWP Tooth profile and offset cast iron hub to allow clearance over wall mounted bearing unit. PM78/40T being a typical sprocket configuration.

CLIMAX SPROCKETS

Standard diameters at 23 tooth and 17 tooth (19, 21 and 25 tooth also available).

In cast nylon or UHMW polyethylene. Configured with the Hunter style tooth form known as double life profile with chain saver rims. Split construction or solid construction. (Can be used with metallic and non metallic chains).



NON METALLIC CHAIN

PM78 2.609" drive chain manufactured from Acetal material with 304 SS chain pins with knurled feature for positive retention, combined with easy extraction.

NON METALLIC SCREEN

CHAIN 720S is the latest generation collector chain, lightweight, corrosion resistant and proven to deliver excellent service life over an extended period. Links are manufactured in Kings 'in house' plastics division subject to the dictates of ISO9000. Manufactured from Acetal Engineering Plastic PM720S includes the unique T head snap in pin design which obviates the need for separate and vulnerable pin retainers. Chain saver sidebars extend service life of chain and sprockets.

CLIMAX CHANNEL FLIGHTS

CHANNEL FLIGHTS SCF STANDARD DUTY CHANNEL FLIGHTS (As Illustrated)

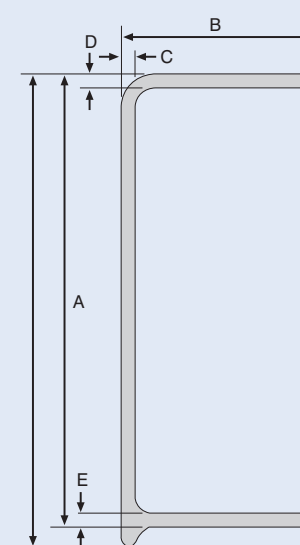
C section construction of an isothalic polyester with standard or high glass content dependent on applicational demand.

EDF EXTREME DUTY CHANNEL FLIGHTS

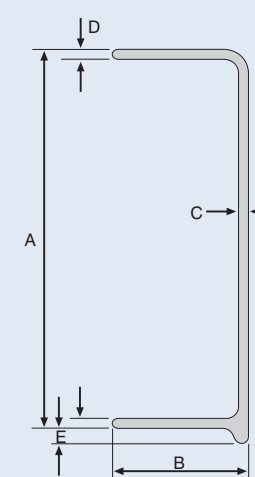
This extreme duty flight gains its high strength and rigidity from the unique structural form. Designed for operation in tanks of up to 36 feet and extreme service requirements. The profile obviates the need for spacer blocks (CSB).

Series	A	B	C	D	E	F	G
SCF6	5 1/4	2 1/2	1/8	3/16	3/16		
SCF7	7 1/8	2 1/2	1/8	3/16	3/1		
HSF8	7 1/8	3.00	3/16	7/32	7/166		
EDF8	7 1/8	3.00	1/4	1/4	7 7/16	7/8	2.00

HSF CHANNEL FLIGHT



SCF CHANNEL FLIGHT



EDF CHANNEL FLIGHT

