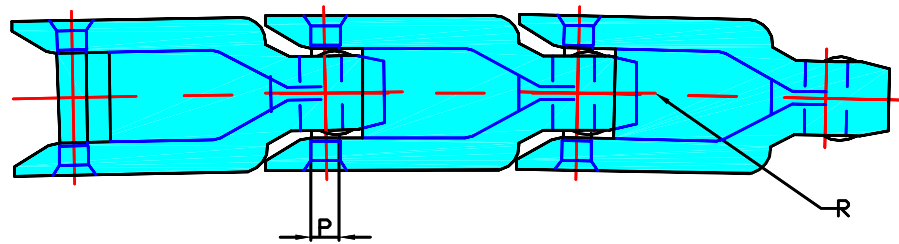
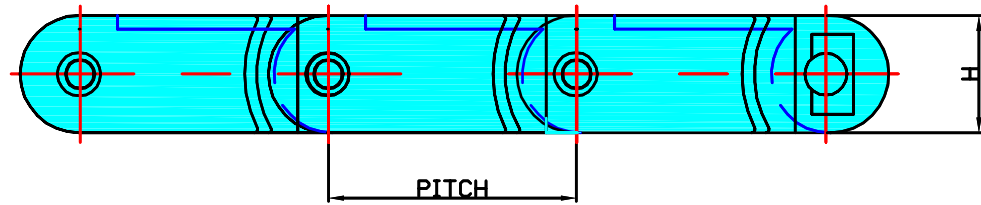


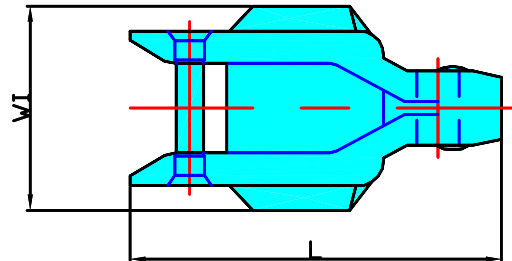
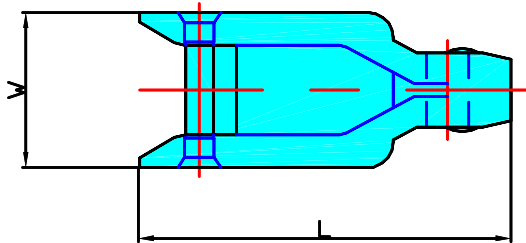
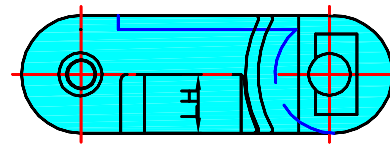
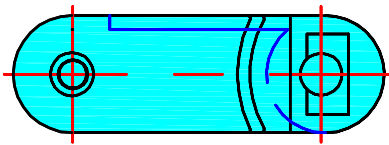
## ACETAL CASE CHAINS

## JK1400 / JK1400D



### STANDARD TYPE

### D TYPE



CHAIN N°	PITCH		P		PIN TYPE	L		W		WI		H		LH		R	CHAIN wt/m kg	UTS kg	MAX LOAD kg	
	in	mm	in	mm		in	mm	in	mm	in	mm	in	mm	in	mm					
JK1400	3.25	82.55	0.44	11	S,C,R	4.85	118.10	2.0	50.80	-	-	1.50	38.1	-	-	26	660	2.09	2265	1200
JK1400D	3.25	82.55	0.44	11	S,C,R	4.85	118.10	2.0	50.80	2.625	66.68	1.50	38.1	0.64	16.26	26	660	2.30	2265	1200

Pin types: K-Knurled



(UK) John King Chains Limited.  
 New Climax Works, Lancaster Way, Sherburn in Elmet LS25 6NS UK  
 Telephone: (44) 01977 681910 Facsimile: (44) 01977 681899  
 E-mail: admin@johnking-chain.com  
 technical@johnking-chain.com  
 sales@johnking-chain.com

John King (USA) Inc.  
 200 Catherine Street, Unit 7B, E. Peoria IL61611 USA  
 Telephone: 309-698-9250 Facsimile: 309-698-9259  
 E-mail: salesusa@johnking-chain.com

Web: www.johnkingchains.com